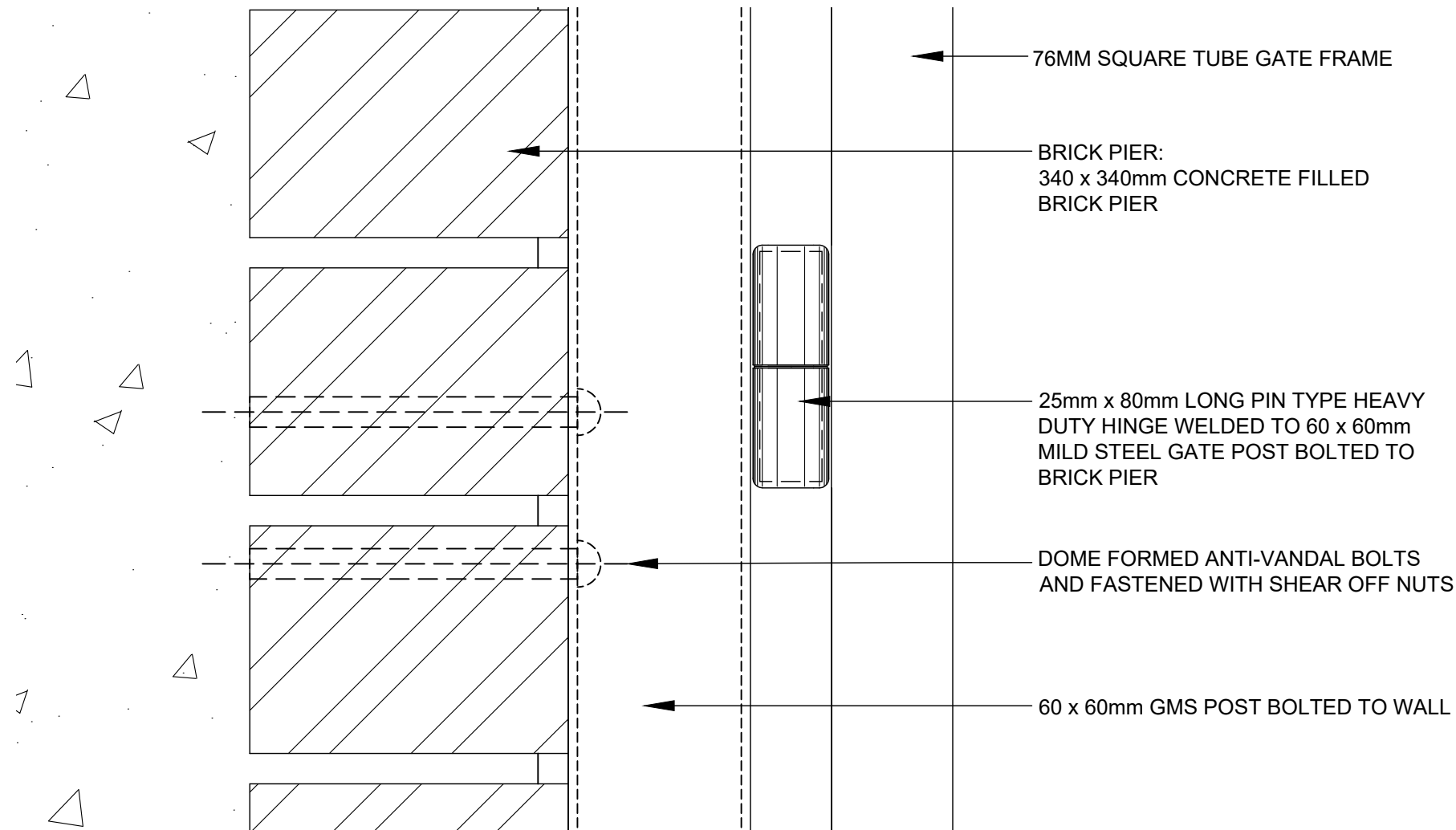
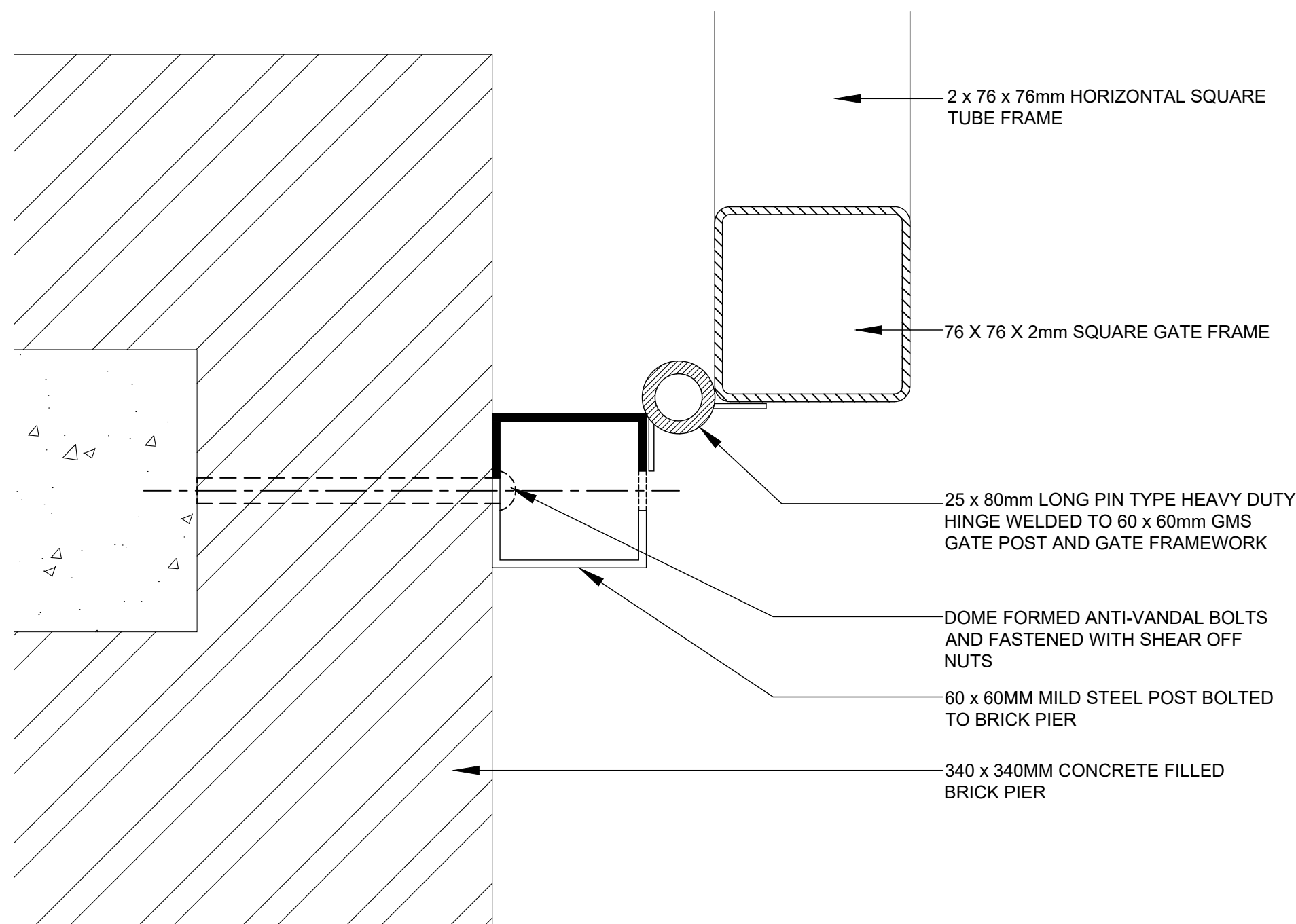


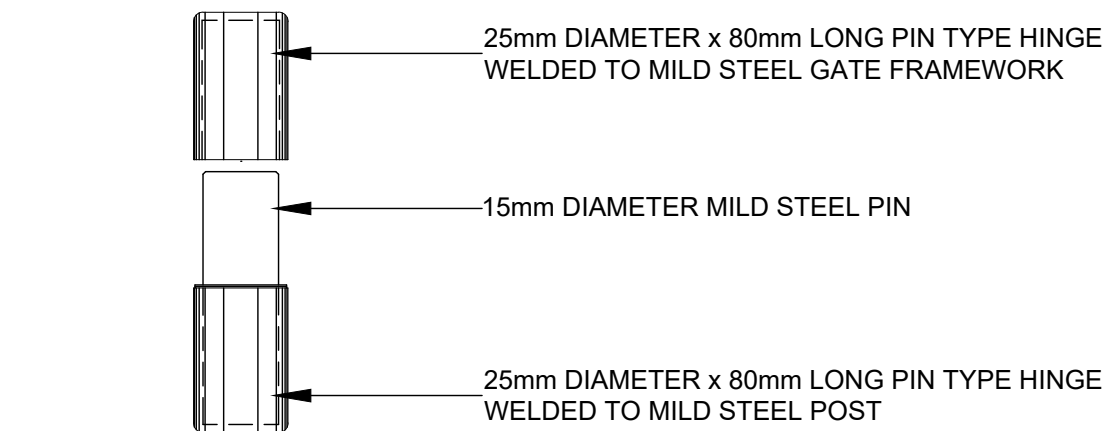
**VEHICLE GATE DETAIL - 1**  
SCALE 1:20



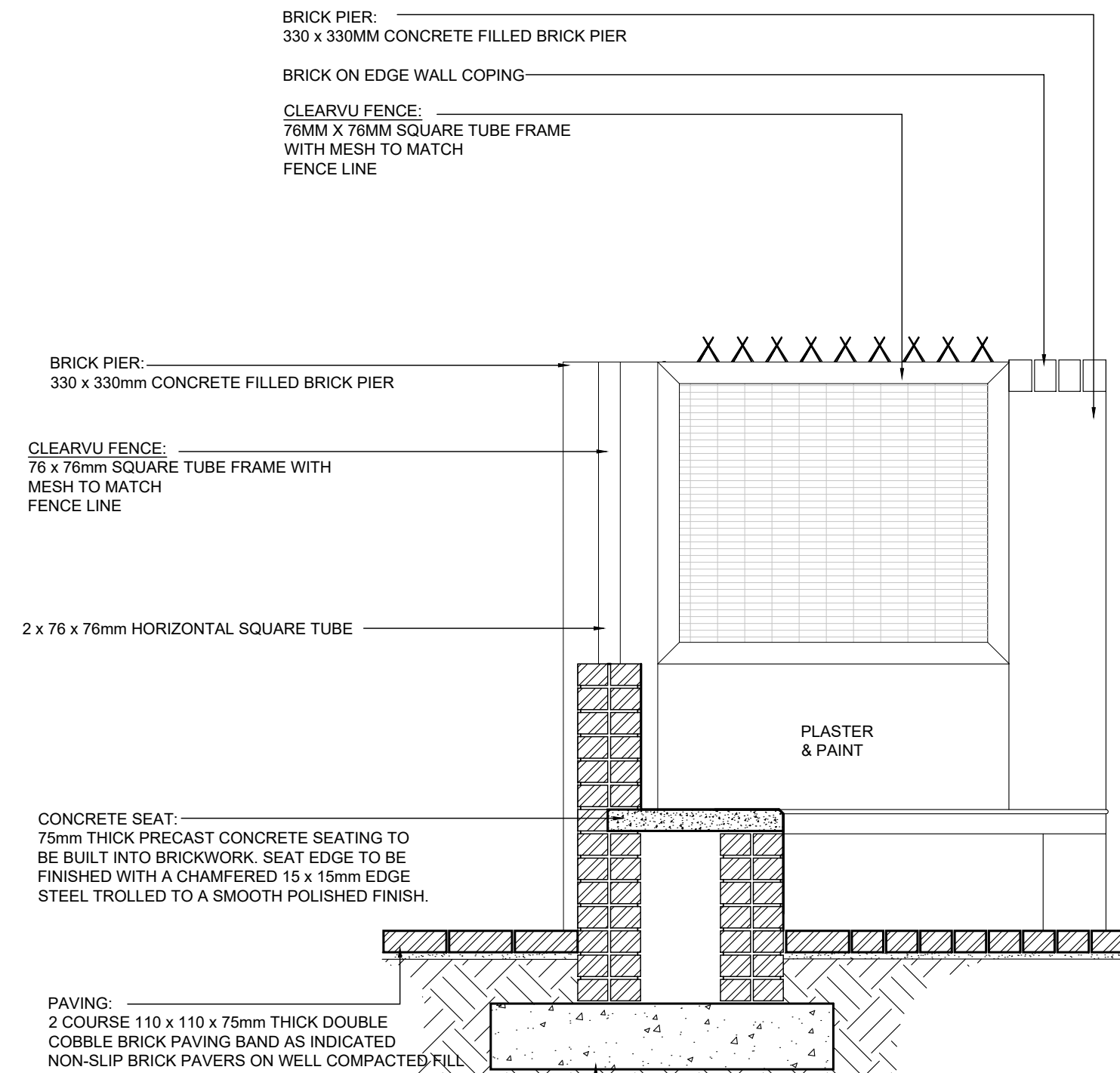
**GATE HINGE DETAIL 3**  
SCALE 1:2



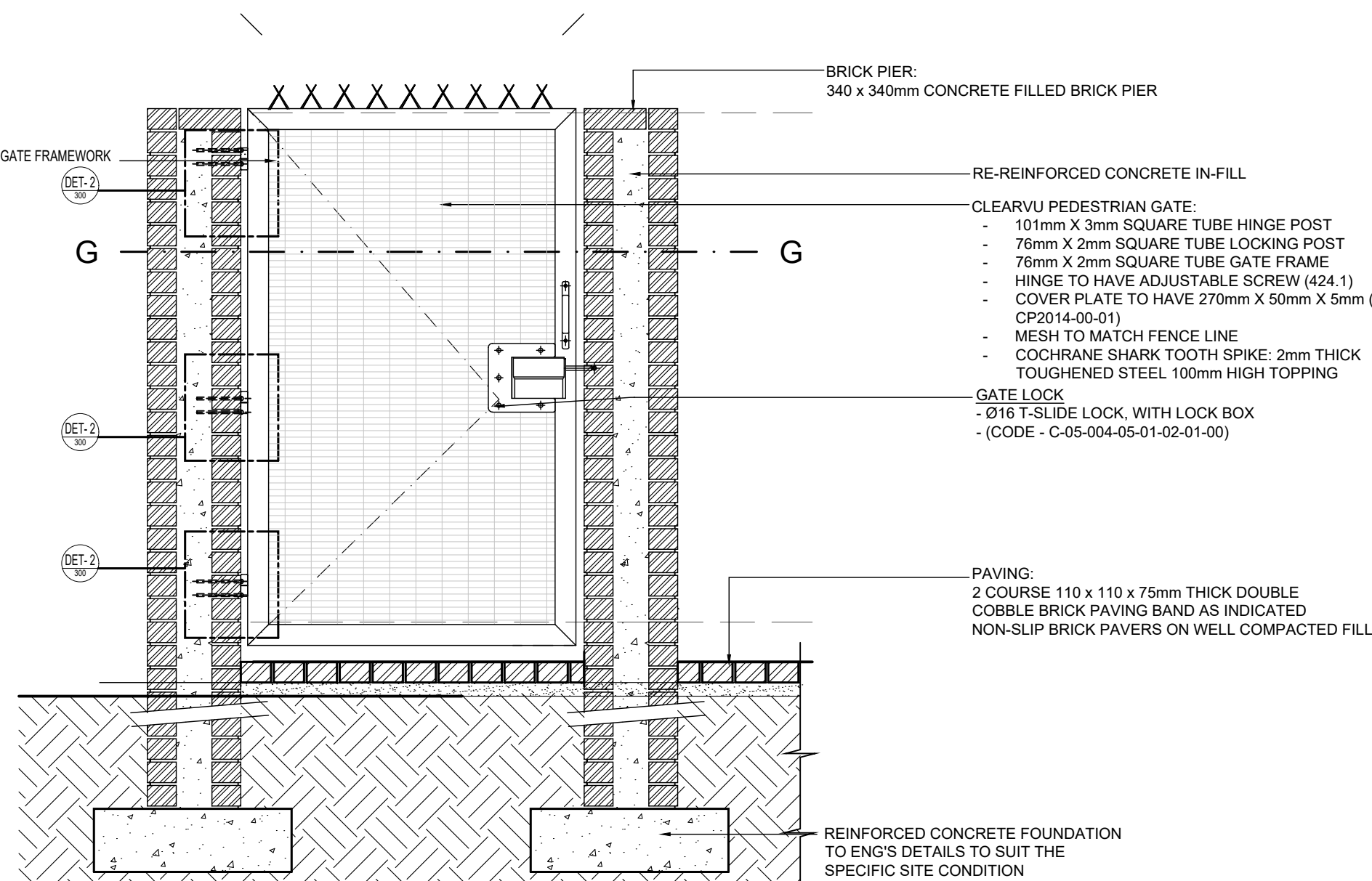
**GATE HINGE DETAIL 4**  
SCALE 1:2



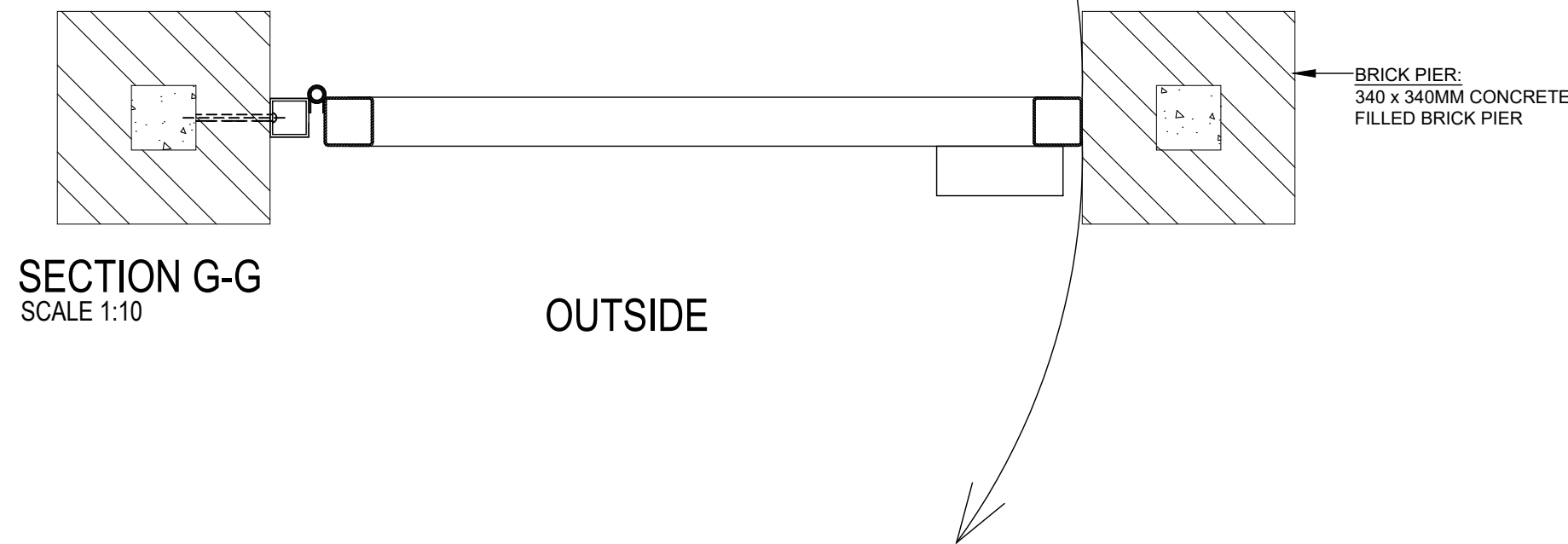
**GATE HINGE ASSEMBLY**  
SCALE 1:2



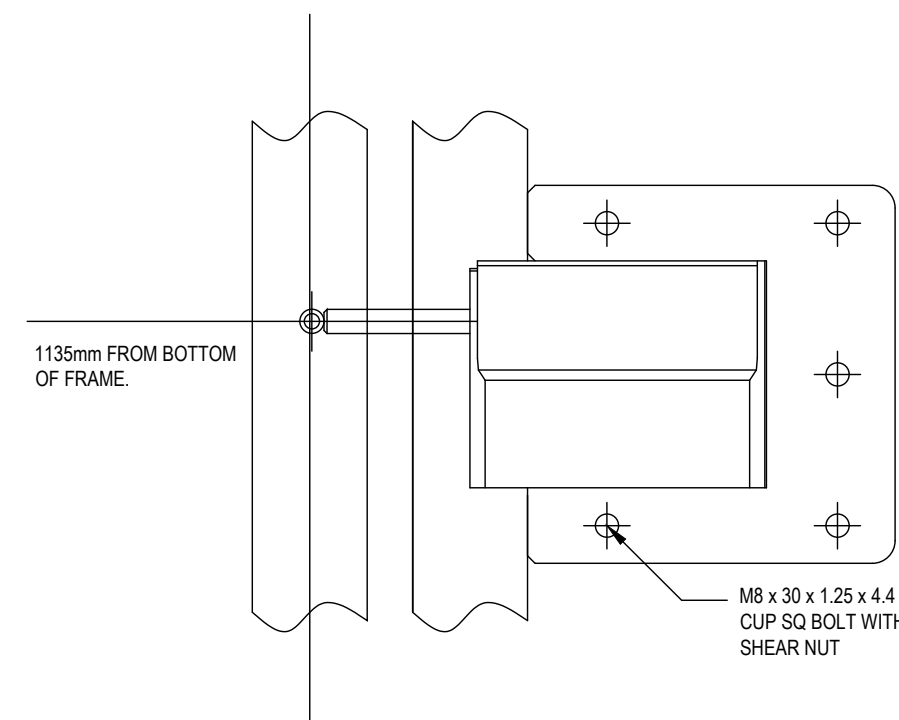
**DETAIL SECTION B-B**  
SCALE 1:20



**PEDESTRIAN GATE DETAIL - 2**  
SCALE 1:20

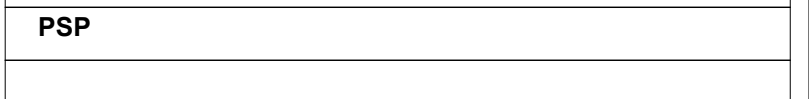
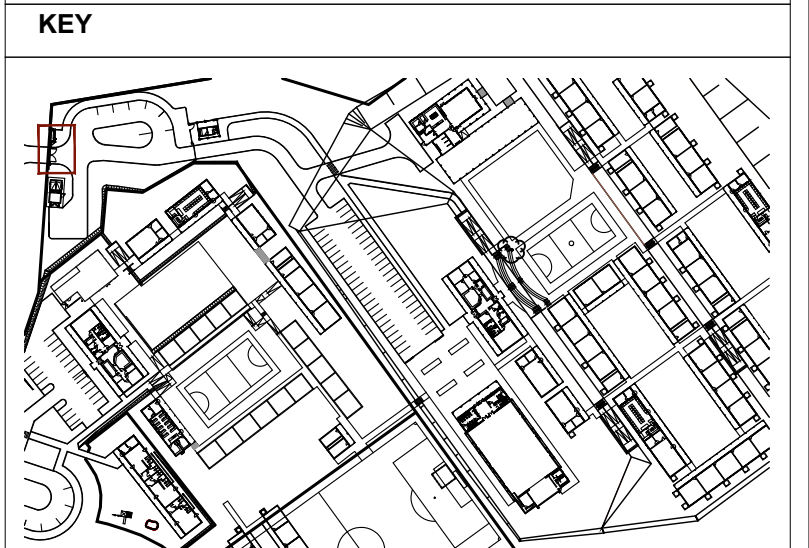


**LOCKING DEVICE DETAIL**  
SCALE 1:5



NO.	DATE	REVISION	DRAWN
A	2017-02-10	ISSUED FOR MEASURE	SG
B	2017-02-16	ISSUED FOR INFORMATION	SG
C	2017-02-27	ISSUED FOR CO-ORDINATION	SG
D	2017-06-22	ISSUED FOR INFORMATION	RJS
E	2021-03-01	ISSUED FOR INFORMATION	DW
F	2022-04-13	ISSUED FOR INFORMATION (EPMS)	RJS
AA	2022-07-15	ISSUED FOR MEASURE	DW

**ISSUED FOR APPROVAL**



**ARCHITECT**

**mpande-consultants**  
architects & project managers

13 Cumberland Street, Mithatha  
P.O. Box 7185  
Mithatha, 5100  
Tel: 047 533 0382  
Fax: 086-649-2131

18 Lower Goldenhays Drive,  
Ermolenburg, Johannesburg  
P.O. Box 91104  
Auckland Park, 2006  
Tel: 011-486-2623  
Fax: 086-649-1925  
Email: mpande@mpandecm.co.za

**ARCHITECTURAL PROFESSIONAL SACAP NUMBERS:**  
**H.L. MANTEL SACAP 3045**

**IMPLEMENTED BY**

**INDEPENDENT DEVELOPMENT TRUST**

SIGNATURE	DATE	SHEET NO.
DESIGNED	-	SCALE
DRAWN	SG	1:100
VERIFIED	-	STATUS LOGGED
VALIDATED	-	FM = FOR MEASURE T = TENDER C = CONSTRUCTION AB = AS BUILT CO = CO-ORDINATION

**CLIENT**

Province of the **EASTERN CAPE**  
EDUCATION

**IMPLEMENTING AGENT**

**idt**  
INDEPENDENT DEVELOPMENT TRUST

**PROJECT**  
**DOE PORTFOLIO PROGRAMME**  
**ESTABLISHMENT OF NEW SCHOOLS**  
**HILLBROW - SENIOR SECONDARY SCHOOL**  
**PROVINCE: EASTERN CAPE PROVINCE**

**DRAWING TITLE**  
**GATE AND FENCE DETAILS**

**DRAWING DESCRIPTION**  
-

EMIS NUMBER	DISCIPLINE	DRAWING NUMBER	STATUS	REVISION
200500293	ARCH	2204 w03 04/201	FA	AA